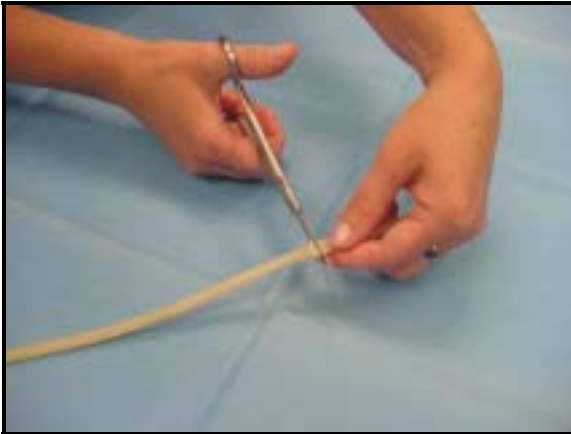
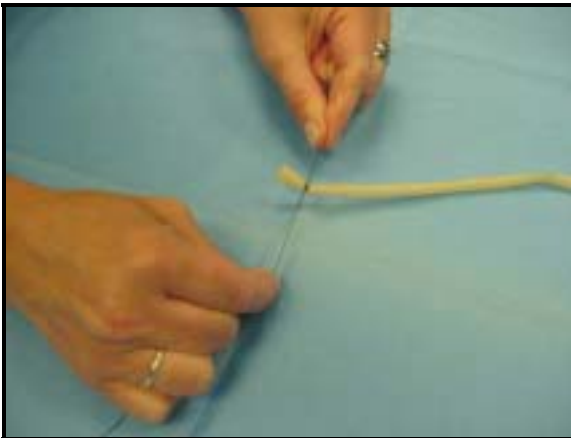


Steps



1. Cut penrose tubing into 25-30 cm segments

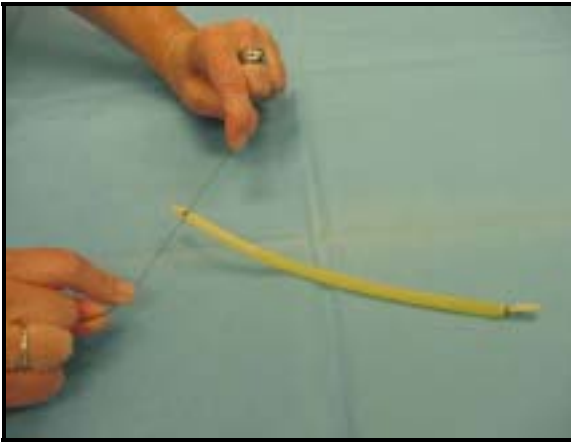


2. Tie off one end of a penrose tubing segment



3. - Fill 10cc syringe with yellow dye

- Inject dye into the latex penrose tubing



4. Tie off the second end of the tube with silk ties



5. - Put penrose tubing on top of the jello pad
- Secure penrose tubing with tape on the bottom of the jello pad



6. Position the model in the middle of the tray



7. Surround the model with foam bowel



8. Place a folded towel on top of the model, away from the practitioner



9. Staple a piece of skin onto the towel



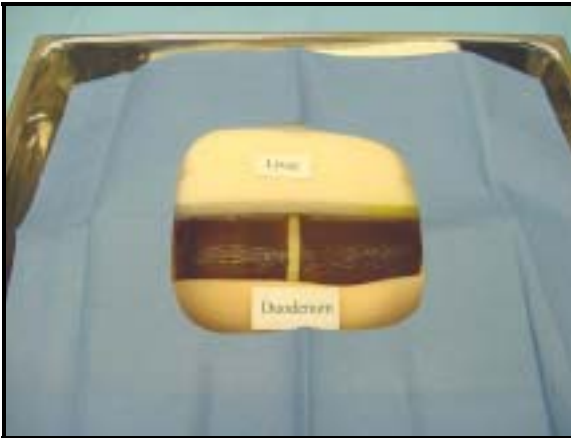
10. - Label skin as "liver"

- Mark foam bowel as "duodenum"

(Steps 7-10 serve as landmarks and add to the realism of the model. They can be skipped to create a simpler model)



11. Using marking pen, draw a dot on left side of the penrose tubing to indicate the location of the common bile duct stump



12. Cover the model with blue paper towel